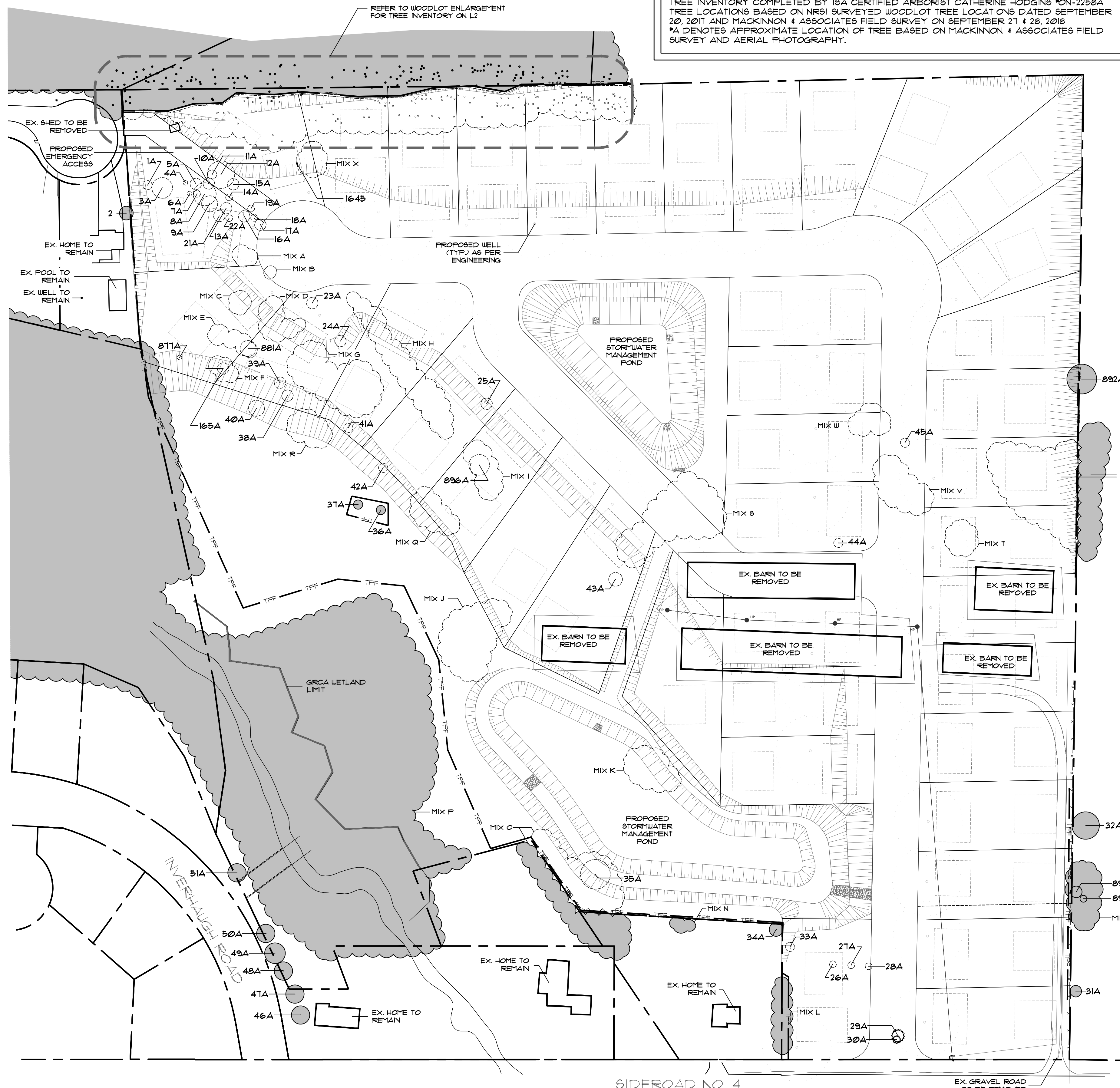
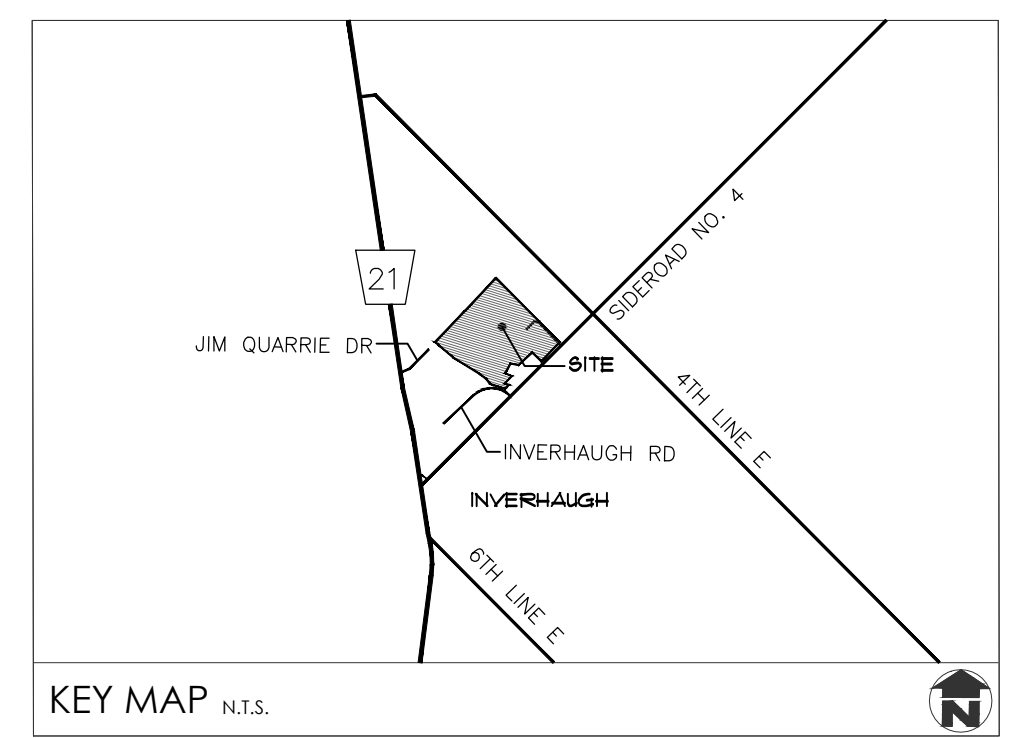


NOTE:
 SITE VISIT DATE: SEPTEMBER 21 & 28, 2018
 TREE INVENTORY COMPLETED BY ISA CERTIFIED ARBORIST CATHERINE HODGINS MON-2258A
 TREE LOCATIONS BASED ON NRSI SURVEYED WOODLOT TREE LOCATIONS DATED SEPTEMBER 20, 2017 AND MACKINNON & ASSOCIATES FIELD SURVEY ON SEPTEMBER 21 & 28, 2018
 *A DENOTES APPROXIMATE LOCATION OF TREE BASED ON MACKINNON & ASSOCIATES FIELD SURVEY AND AERIAL PHOTOGRAPHY.



MIX	SPECIES	D.B.H.	CONDITION	STATUS	ADDITIONAL NOTES
A	CRATAEGUS SP. AND RHAMNUS CATHARTICA	20cm-30cm	FAIR-DEAD	TO BE REMOVED	
B	CRATAEGUS SP. AND RHAMNUS CATHARTICA	20cm-30cm	FAIR-DEAD	TO BE REMOVED	VINE CHOKED
C	CRATAEGUS SP. AND RHAMNUS CATHARTICA	20cm-30cm	FAIR-DEAD	TO BE REMOVED	
D	CRATAEGUS SP. AND RHAMNUS CATHARTICA	20cm-30cm	FAIR-DEAD	TO BE REMOVED	
E	CRATAEGUS SP., RHAMNUS CATHARTICA AND FRAXINUS SP.	10cm-25cm	FAIR-DEAD	TO BE REMOVED	
F	THUJA OCCIDENTALIS, CELTIS OCCIDENTALIS AND RHAMNUS CATHARTICA	>10cm-20cm	GOOD-POOR	TO BE REMOVED	AT EDGE OF SLOPE AND DOWN SLOPE
G	CRATAEGUS SP. AND RHAMNUS CATHARTICA	>10cm-25cm	FAIR-DEAD	TO BE REMOVED	
H	CRATAEGUS SP. AND RHAMNUS CATHARTICA	>10cm-30cm	FAIR-DEAD	TO BE REMOVED	
I	CRATAEGUS SP., LONICERA SP., FRAXINUS SP., AND RHAMNUS CATHARTICA	>10cm-45cm	GOOD-DEAD	TO BE REMOVED	
J	THUJA OCCIDENTALIS, FRAXINUS SP., PINUS SYLVESTRIS AND RHAMNUS CATHARTICA	>10cm-45cm	GOOD-DEAD	TO BE REMOVED	
K	ULMUS PIMULA AND RHAMNUS CATHARTICA	>10cm-50cm	GOOD-FAIR	TO BE PRESERVED	
L	PICEA PUNGENS	20cm-25cm	GOOD	TO BE PRESERVED	BOUNDARY TREES
M	CRATAEGUS SP., CELTIS OCCIDENTALIS, RHAMNUS CATHARTICA AND FRAXINUS SP.	>10cm-35cm	FAIR-DEAD	TO BE PRESERVED	
N	THUJA OCCIDENTALIS AND PICEA PUNGENS	20cm	GOOD	TO BE PRESERVED	ON ADJACENT PROPERTY
O	CELTIS OCCIDENTALIS, RHUS TYPHINA, THUJA OCCIDENTALIS, FRAXINUS SP., AND RHAMNUS CATHARTICA	>10cm-25cm	GOOD-FAIR	TO BE REMOVED (SEE NOTE)	TO BE REMOVED ON SUBJECT PROPERTY ONLY
P	SALIX BABYLONICA, THUJA OCCIDENTALIS, PINUS SYLVESTRIS, ACER NEGUNDO, CELTIS OCCIDENTALIS, ULMUS PIMULA, LONICERA SP., FRAXINUS SP., AND RHAMNUS CATHARTICA	>10cm-60cm	GOOD-DEAD	TO BE PRESERVED	
Q	POPULUS SP.	>10cm-25cm	GOOD	TO BE REMOVED	
R	THUJA OCCIDENTALIS	>10cm-25cm	GOOD	TO BE REMOVED	
S	POPULUS SP., SALIX ALBA, AND THUJA OCCIDENTALIS	>10cm-25cm	GOOD-FAIR	TO BE REMOVED	
T	RHAMNUS CATHARTICA	>10cm-20cm	GOOD	TO BE REMOVED	
U	CRATAEGUS SP., FRAXINUS SP., AND RHAMNUS CATHARTICA	>10cm-25cm	GOOD-DEAD	TO BE REMOVED (SEE NOTE)	TO BE REMOVED ON SUBJECT PROPERTY ONLY
V	CRATAEGUS SP., ACER NEGUNDO, AND MALUS SP.	30cm-45cm	FAIR-DEAD	TO BE REMOVED	
W	CRATAEGUS SP., ACER NEGUNDO, FRAXINUS SP., AND RHAMNUS CATHARTICA	>10cm-40cm	FAIR-POOR	TO BE REMOVED	
X	POPULUS SP.	>10cm-25cm	GOOD	TO BE REMOVED	



- ### GENERAL NOTES
- ALL WORKMANSHIP WILL BE TO THE STANDARDS OF LANDSCAPE ONTARIO.
 - ALL PLANT MATERIAL TO BE NO.1 GRADE NURSERY GROWN IN ACCORDANCE WITH THE CANADIAN STANDARDS FOR NURSERY STOCK, 6TH EDITION, 1998, BY THE CANADIAN NURSERY TRADES ASSOCIATION.
 - BACKFILL WILL CONSIST OF SOIL NATIVE TO THE SITE OR GENERAL SOIL TYPE/CLASS NATIVE TO THE SITE. TOPSOIL TO BE TESTED FOR NUTRIENT VALUE AND AMENDED FOR OPTIMAL GROWTH AS PER THE RECOMMENDATIONS OF THE SOIL TEST.
 - CONTRACTOR SHALL MAINTAIN ALL LANDSCAPE AREAS UNTIL OWNER'S ACCEPTANCE OF PROJECT.
 - CONTRACTOR TO LOCATE ALL UNDERGROUND UTILITIES.
 - PLANTING MAY BE ADJUSTED TO SUIT LOCATIONS OF SITE UTILITY STRUCTURES/SERVICES.
 - ALL MATERIALS MUST BE APPROVED BY LANDSCAPE ARCHITECT PRIOR TO INSTALLATION.
 - SPREAD MULCH TO A MINIMUM OF 100mm COMPACTED DEPTH ON ALL TREE PITS AND PLANTING BEDS.
 - CHECK AND VERIFY ALL DIMENSIONS AND QUANTITIES PRIOR TO COMMENCEMENT OF WORK. ANY DISCREPANCIES ARE TO BE REPORTED IN WRITING TO THE LANDSCAPE ARCHITECT. QUANTITIES NOTED WITHIN THE PLAN SUPERSEDE THOSE IN THE PLANT LIST. ANY SUBSTITUTIONS SHALL BE APPROVED BY THE LANDSCAPE ARCHITECT.
 - SOD AS MARKED WITH NURSERY SOD ON A MINIMUM OF 100mm OF CLEAN TOPSOIL. FINE GRADE AND SOD ALL BOULEVARD AREAS TO MUNICIPAL SPECIFICATIONS AND REPAIR DAMAGE TO ADJACENT PROPERTIES AS REQUIRED.
 - FINAL INSPECTION AND ACCEPTANCE OF PLANTING WORK SHALL COINCIDE WITH THE FINAL INSPECTION AND ACCEPTANCE OF ALL WORK INCLUDED IN THE CONTRACT.
 - ALL SLOPED SLOPES 3:1 AND GREATER TO RECEIVE EROSION CONTROL MATTING (COIR MAT, OR OTHER WILD-LIFE FRIENDLY ALTERNATIVE). PIN SOD ON ALL SLOPES OF 3:1 OR GREATER.
 - SUBMIT A WRITTEN GUARANTEE TO THE EFFECT THAT ALL PLANTS ACCEPTED DURING THE PERIOD OF JANUARY 1st TO JULY 15th SHALL BE GUARANTEED UNTIL JULY 15th THE FOLLOWING YEAR. PLANTS ACCEPTED DURING THE PERIOD OF JULY 15th TO DECEMBER 31st SHALL BE GUARANTEED FOR ONE YEAR FROM THE DATE OF ACCEPTANCE. THE GUARANTEE PERIODS LISTED ABOVE SHALL APPLY TO ALL 'NURSERY GROWN' PLANTS.
 - AT THE TIME OF FINAL INSPECTION ALL PLANTS SHALL BE IN A HEALTHY, VIGOROUS GROWING CONDITION, PLANTED IN FULL ACCORDANCE WITH DRAWINGS AND CONDITIONS.
 - TOPOGRAPHIC INFORMATION AS PER VAN HARTEN SURVEYING.
 - DRAFT PLAN OF SUBDIVISION INFORMATION AS PER ASTRID J CLOS PLANNING CONSULTANTS.
 - ENGINEERING AS PER G1 BLUEPLAN ENGINEERING LIMITED.

ELORA RIDGE DEVELOPMENTS LIMITED
 INVERHAUGH PASTURE EDGE SUBDIVISION

NO.	SPECIES	D.B.H.	COND.	STATUS	ADDITIONAL NOTE
1A	CRATAEGUS SP.	15cm	DEAD	TO BE REMOVED	MULTI TRUNK
2	ACER PLATANOIDES	25cm	GOOD	TO BE PRESERVED	ON ADJACENT PROPERTY
3A	FRAXINUS SP.	25cm	FAIR	TO BE REMOVED	TRUNK WOUNDS
4A	FRAXINUS SP.	15cm	GOOD	TO BE REMOVED	
5A	CRATAEGUS SP.	15cm	DEAD	TO BE REMOVED	MULTI TRUNK
6A	QUELQUUS MACROCARPA	10cm	GOOD	TO BE REMOVED	
7A	FRAXINUS SP.	10cm	FAIR	TO BE REMOVED	2 TRUNKS, TRUNK DAMAGE
8A	FRAXINUS SP.	25cm	FAIR	TO BE REMOVED	
9A	FRAXINUS SP.	25cm	FAIR	TO BE REMOVED	LEANING
10A	FRAXINUS SP.	20cm	FAIR	TO BE REMOVED	
11A	FRAXINUS SP.	20cm	FAIR	TO BE REMOVED	
12A	MALUS SP.	45cm	FAIR	TO BE REMOVED	30% DEAD BRANCHES
13A	CRATAEGUS SP.	25cm	DEAD	TO BE REMOVED	MULTI TRUNK
14A	FRAXINUS SP.	15cm	GOOD	TO BE REMOVED	
15A	CRATAEGUS SP.	25cm	DEAD	TO BE REMOVED	MULTI TRUNK
16A	CRATAEGUS SP.	25cm	DEAD	TO BE REMOVED	MULTI TRUNK
17A	CRATAEGUS SP.	20cm	DEAD	TO BE REMOVED	COPPICE
18A	CRATAEGUS SP.	20cm	DEAD	TO BE REMOVED	
19A	CRATAEGUS SP.	20cm	DEAD	TO BE REMOVED	VINE CHOKED
20A	CRATAEGUS SP.	25cm	DEAD	TO BE REMOVED	
21A	RHAMNUS CATHARTICA	15cm	POOR	TO BE REMOVED	MULTI TRUNK
22A	CRATAEGUS SP.	25cm	DEAD	TO BE REMOVED	
23A	CRATAEGUS SP.	25cm	DEAD	TO BE REMOVED	
24A	CRATAEGUS SP.	20cm	DEAD	TO BE REMOVED	
25A	CRATAEGUS SP.	25cm	DEAD	TO BE REMOVED	
26A	ULMUS PIMULA	10cm	GOOD	TO BE REMOVED	MULTI TRUNK
27A	ULMUS PIMULA	10cm	GOOD	TO BE REMOVED	MULTI TRUNK
28A	ULMUS PIMULA	10cm	GOOD	TO BE REMOVED	MULTI TRUNK
29A	JUNIPERUS VIRGINIANA	25cm	GOOD	TO BE REMOVED	
30A	JUNIPERUS VIRGINIANA	15cm	POOR	TO BE REMOVED	DEAD LEADER
31A	CRATAEGUS SP.	25cm	DEAD	TO BE PRESERVED	
32A	FRAXINUS SP.	50cm	FAIR	TO BE PRESERVED	TRUNK DAMAGE, 4 TRUNKS
33A	ACER PLATANOIDES	15cm	GOOD	TO BE PRESERVED	
34A	ACER PLATANOIDES	25cm	GOOD	TO BE PRESERVED	
35A	ACER PLATANOIDES	25cm	GOOD	TO BE PRESERVED	
36A	BETULA PAPYRIFERA	25cm	GOOD	TO BE PRESERVED	ON ADJACENT PROPERTY
37A	SALIX BABYLONICA	65cm	GOOD	TO BE PRESERVED	
38A	MALUS SP.	20cm	POOR	TO BE PRESERVED	
39A	MALUS SP.	20cm	FAIR	TO BE PRESERVED	
40A	ACER NEGUNDO	25cm	FAIR	TO BE PRESERVED	
41A	ACER NEGUNDO	20cm	FAIR	TO BE REMOVED	COPPICE
42A	ACER NEGUNDO	35cm	POOR	TO BE REMOVED	30% DEAD
43A	ACER NEGUNDO	15cm	FAIR	TO BE REMOVED	ON SLOPE
44A	ACER NEGUNDO	15cm	FAIR	TO BE REMOVED	TRUNK DAMAGE, MULTI TRUNKS
45A	POPULUS SP.	40cm	GOOD	TO BE REMOVED	CO-DOMINANT STEMS W INCLUDED BARK
46A	RHAMNUS CATHARTICA	25cm	GOOD	TO BE REMOVED	MULTI TRUNK
47A	FRAXINUS SP.	25cm	DEAD	TO BE REMOVED	
48A	ACER PLATANOIDES	50cm	GOOD	TO BE PRESERVED	CO-DOMINANT STEMS W INCLUDED BARK
49A	ACER PLATANOIDES	50cm	GOOD	TO BE PRESERVED	CO-DOMINANT STEMS W INCLUDED BARK
50A	ACER PLATANOIDES	60cm	GOOD	TO BE PRESERVED	CO-DOMINANT STEMS W INCLUDED BARK
51A	ACER PLATANOIDES	60cm	GOOD	TO BE PRESERVED	CO-DOMINANT STEMS W INCLUDED BARK
52A	ACER PLATANOIDES	50cm	GOOD	TO BE PRESERVED	CO-DOMINANT STEMS W INCLUDED BARK
53A	CELTIS OCCIDENTALIS	15cm	FAIR	TO BE REMOVED	
54A	FRAXINUS SP.	10cm	GOOD	TO BE REMOVED	
55A	FRAXINUS SP.	25cm	GOOD	TO BE REMOVED	
56A	ACER PLATANOIDES	65cm	GOOD	TO BE PRESERVED	BOUNDARY TREE
57A	CELTIS OCCIDENTALIS	25cm	FAIR	TO BE REMOVED	
58A	CELTIS OCCIDENTALIS	15cm	FAIR	TO BE PRESERVED	
59A	FRAXINUS SP.	45cm	GOOD	TO BE PRESERVED	

LEGEND

	EXISTING TREES TO REMAIN
	EXISTING TREES TO BE REMOVED
	TREE PROTECTION FENCE

- ### TREE PROTECTION NOTES
- AS PART OF ANY TREE REMOVAL OPERATION ALL STEMS, LIMBS AND STUMPS SHOULD BE REMOVED FROM THE SITE.
 - UPON COMPLETION OF ANY TREE REMOVAL OPERATIONS, TREE PROTECTION FENCING SHOULD BE INSTALLED AS ILLUSTRATED. THIS PROTECTION FENCING SHOULD BE MAINTAINED UNTIL ALL EXCAVATION AND BUILDING CONSTRUCTION WORK IS COMPLETED. SEE TREE PROTECTION FENCING DETAIL ON L2.
 - ANY ROOTS DISTURBED DURING CONSTRUCTION SHOULD BE CUT CLEANLY AND BURIED IMMEDIATELY.
 - NO HEAVY EQUIPMENT OR STOCKING OF MATERIAL SHALL OCCUR WITHIN THE DRIPLINES OF ANY TREES THAT ARE TO BE PRESERVED.
 - TREE PROTECTION MEASURES TO BE INSPECTED BY LANDSCAPE ARCHITECT AND CITY FORESTRY STAFF PRIOR TO START OF CONSTRUCTION.
 - IF CONSTRUCTION OR ANY WORK OCCURS WITHIN THE TREE PRESERVATION ZONE, INSIDE THE LIMITS OF THE TREE PROTECTION FENCE, IT IS NECESSARY TO ONLY USE HAND TOOLS. NO MACHINERY WILL BE PERMITTED IN THIS ZONE.
 - ANY EXISTING VEGETATION THAT IS IMPACTED DURING SITE DEVELOPMENT WILL BE REINSTATED TO THE SATISFACTION OF THE CITY.

PROPOSED DEVELOPMENT
 INVERHAUGH
 TOWNSHIP OF CENTRE WELLINGTON
 Tree Management Plan

MacKinnon & Associates
 Providing Solutions in Urban, Landscape and Environmental Planning
 a division of 90216 Ontario Inc.

550 Parkside Drive, Unit A-21, Waterloo, Ontario N2L 5V4
 Tel: (519) 725-5140 FAX: (519) 725-5144

DRAWN BY: CMH	DESIGNED BY: CMH	APPROVED BY: AWH
PROJECT NO: 2018-58	SCALE: 1:1000	DATE: August 2018
DATE: December 14, 2018	SHEET: L1	

