

DRAFT PLAN OF
COMMON ELEMENTS CONDOMINIUM OF
PART OF BLOCKS 1 AND 2,
PLAN 62M-xxx
TOWNSHIP OF CENTRE WELLINGTON
COUNTY OF WELLINGTON

SCALE 1:1500
1cm = 15m
R-P-E SURVEYING LTD., O.L.S.
METRIC
DISTANCES AND COORDINATES SHOWN ON THIS PLAN ARE IN METRES AND
CAN BE CONVERTED TO FEET BY DIVIDING BY 0.3048.

NOTES
--- DENOTES EXTENT OF LANDS OWNED BY APPLICANT
P.L.N. DENOTES PROPERTY IDENTIFIER NUMBER

SURVEYOR'S CERTIFICATE

I CERTIFY THAT THE BOUNDARIES OF THE LANDS TO BE SUBDIVIDED
AND THEIR RELATIONSHIP TO THE ADJOINING LANDS ARE ACCURATELY AND
CORRECTLY SHOWN.

DATE APRIL 20th 2023

C.P. EDWARD
C. P. EDWARD
ONTARIO LAND SURVEYOR

OWNER'S CERTIFICATE

I AUTHORIZE R-P-E SURVEYING LTD., O.L.S. TO PREPARE AND SUBMIT
THIS DRAFT PLAN OF COMMON ELEMENTS CONDOMINIUM TO THE
TOWNSHIP OF CENTRE WELLINGTON FOR APPROVAL.

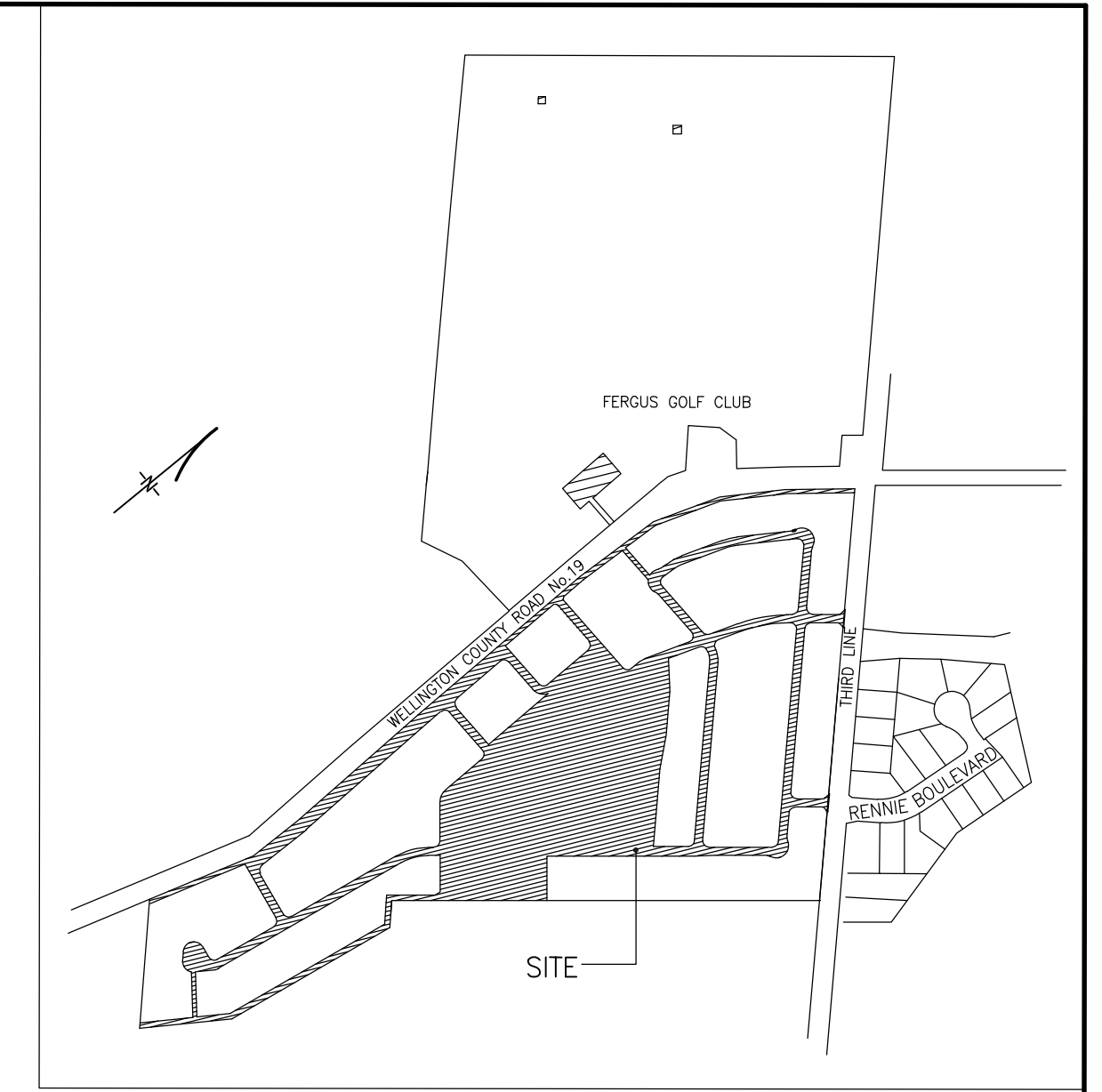
DATE APRIL 20th 2023

883990 ONTARIO LIMITED

SHAWN EVANS
SHAWN EVANS
AUTHORIZED SIGNING OFFICER
I HAVE THE AUTHORITY TO BIND THE CORPORATION

LAND USE

PROPOSED SITE AREA (COMMON ELEMENTS AREA) BELOW ELEVATION 432.00 METRES = 137056.4 m².
PARCELS OF RED LAND (P.R.L.): 118 RESIDENTIAL PARCELS OF RED LAND (P.R.L.).
LAND USE INFORMATION OBTAINED FROM SITE PLAN BY GPS GROUP DATED OCT 24, 2022.



LOT 1, 2, CONCESSION 3
PART 1, PLAN 60R - 2599 PART 1, PLAN 60R - 1700
P.L.N. 71131 - 0025 P.L.N. 71131 - 0027
(AGRICULTURAL) (AGRICULTURAL)

KEY PLAN (NOT TO SCALE)

PART 134, PLAN 61R - XXXX
ADDITIONAL LAND OWNED BY APPLICANT
(GOLF COURSE)

BLOCK 2

PLAN 62M - XXX

PART 134, PLAN 61R - XXXX
ADDITIONAL LAND OWNED BY APPLICANT
(GOLF COURSE)

PLAN 61M - XXX

P.L.N. 71494 - 0307
(AGRICULTURAL)

CONCESSION 3

PLAN CONFIGURATION OF COMMON ELEMENTS ABOVE ELEVATION = 432.00 METRES

