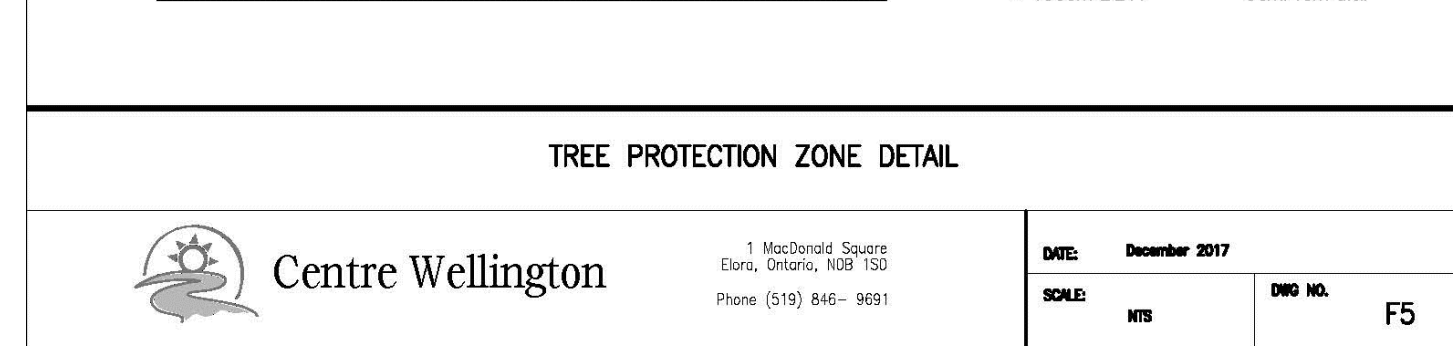
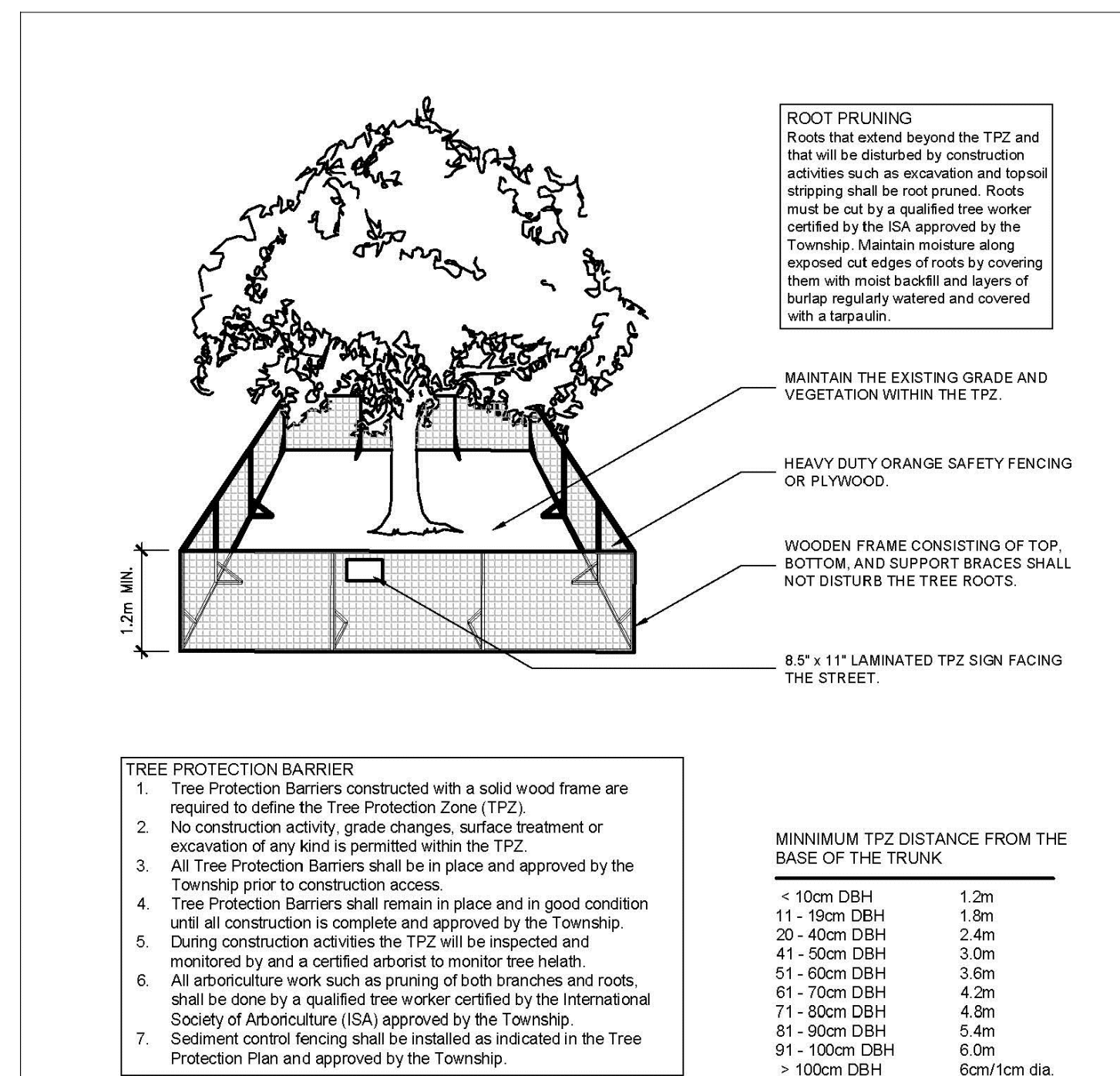


1 TREE INVENTORY, REMOVALS, AND PROTECTION PLAN
SCALE: 1:200

Tree #	Common Name	Botanical Name	DBH (CM)	Canopy (m)	Min. TPZ (m)	Condition	Structure	Comments	Recommendation
1	Siberian Elm	Ulmus pumila	34	12	2.4	F	F	Mild/moderate deadwood in canopy, co-dominant at 1.0m	Retain
2	Black Walnut	Juglans nigra	8	4	1.2	F	P	Growing within cedar hedge, contorted form	Remove due to condition
3	Black Walnut	Juglans nigra	31	16	2.4	F	F/P	Moderate deadwood in canopy, main leader has failed and remains in tree, co-dominant at 4m	Retain
4	Siberian Elm	Ulmus pumila	28	8	1.8	F	F/P	Moderate deadwood in canopy, poor form	Retain
5	Norway Maple	Acer platanoides	48	16	3.0	F/G	F	Mild deadwood in canopy	Remove due to construction
6	Colorado Blue Spruce	Picea pungens var. glauca	28	8	1.8	F	F	One side bare due to adjacent tree	Retain
7	White Spruce	Picea glauca	32	7	2.4	F/G	F	One side bare due to adjacent tree	Retain
8	Sugar Maple	Acer saccharum	~32	~14	2.4	F/G	F/G		Retain
9	Kentucky Coffee Tree	Gymnocladus dioicus	6	1	1.2	G	G	Newly planted, staking and watering bag still present	Retain
10	Kentucky Coffee Tree	Gymnocladus dioicus	6	1	1.2	G	G	Newly planted, staking and watering bag still present	Retain
11	Sugar Maple	Acer saccharum	27	11	1.8	F/G	F/G		Remove due to construction
12	Silver Maple	Acer saccharinum	34	14	2.4	F/P	P	Major past structural failure at north side of tree	Remove due to condition
A	Cedar Hedge	Thuja Sp.	15-25			F-F/G		~50 stems, Approximately 18-20 stems dead in portions close to the south eastern part of the property	Retain
B	Cedar Hedge	Thuja Sp.	4-15			Fair to Poor			Retain



2 TREE PROTECTION DETAIL
STANDARD

Tree Protection Zone (TPZ)

All construction related activities, including grade alteration, excavation, soil compaction, material or equipment storage, disposal of liquids and vehicular access are **PROHIBITED** within the TPZ.

The tree protection barrier must not be removed, moved, or altered in any way without the written authorization of the Township.

Concerns or inquiries regarding this TPZ can be directed to:
519-846-9691 x218

3 TREE PROTECTION ZONE SIGN
STANDARD

LEGEND

- EXISTING DECIDUOUS TREE TO REMAIN
- EXISTING DECIDUOUS TREE TO BE REMOVED (REFER TO ARBORIST REPORT)
- EXISTING CONIFEROUS TREE TO REMAIN
- EXISTING CONIFEROUS TREE TO BE REMOVED (REFER TO ARBORIST REPORT)
- EXISTING TREE GROUPING TO REMAIN
- EXISTING TREE GROUPING TO REMOVE
- TREE IDENTIFICATION KEY (TREES TO BE RETAINED)
- TREE IDENTIFICATION KEY (TREES TO BE REMOVED)
- TREE PROTECTION FENCING PER COUNTY OF WELLINGTON STANDARDS

- ### GENERAL NOTES
- Do not scale the drawings. All dimensions are in millimetres unless noted otherwise.
 - This drawing is to be read in conjunction with the project site plan, landscape plan, and engineering plan.
 - The tree inventory includes assessment of trees >10cm DBH. The trees have been assessed based on species, size and condition.
 - The contractor shall check and verify all existing and proposed grading and conditions on the project and immediately report any discrepancies to the consultant before proceeding with any removals.
 - The contractor is to be aware of all existing and proposed services and utilities. The contractor is responsible for having all underground services and utility lines staked by each agency having jurisdiction prior to commencing work.
 - This drawing is to be used for development approval only.
 - Do not leave any holes open overnight.
 - Keep area outside construction zone clean and useable by others at all times. Contractor shall thoroughly clean areas surrounding the construction zone at the end of each work day.
 - Contractor to make good any and all damages outside of the development area that may occur as a result of tree removals at no extra cost.
 - This drawing is Copyright MHBC Planning, 2021.

1.	APRIL 20, 2022	ISSUED FOR SPA	BT
REVISION NO.	DATE	ISSUED / REVISION	BY

230-7050 WESTON ROAD WOODBRIDGE, ON, L4L 6G7 | P: 905 761 5588 F: 905 761 5589 | WWW.MHBCPLAN.COM

STAMP

ISSUED FOR SPA ONLY
NOT FOR CONSTRUCTION

All drawings and specifications are instruments of service and will remain the property of MHBC Planning and must be returned at the completion of the work. This drawing shall not be used for construction purposes unless the drawings are marked 'Issued for Construction' and the professional seal is signed and dated by the landscape architect.

DATE	APR 2022
DRAWN BY	BT
PLAN SCALE	1:200
FILE NO.	19389H
CHECKED BY	N.M.
OTHER	

PROJECT

223 ST ANDREW'S STREET E
FERGUS, ONTARIO

FILE NAME

TREE INVENTORY, PROTECTION, AND REMOVALS

DWG NO.

TI-1